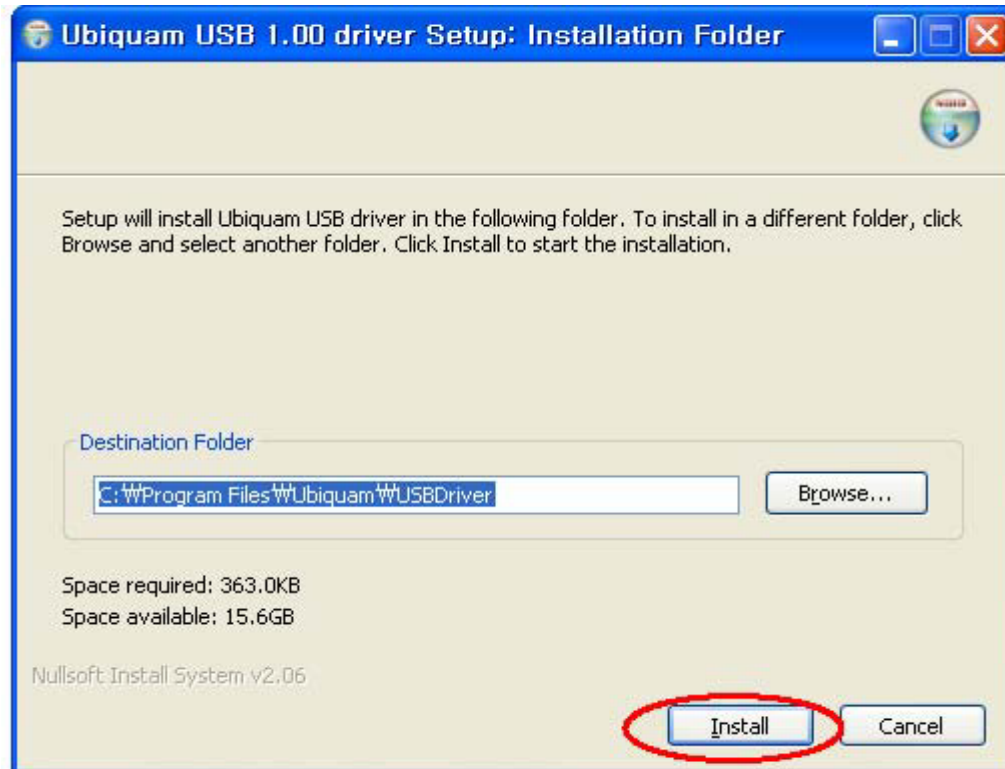


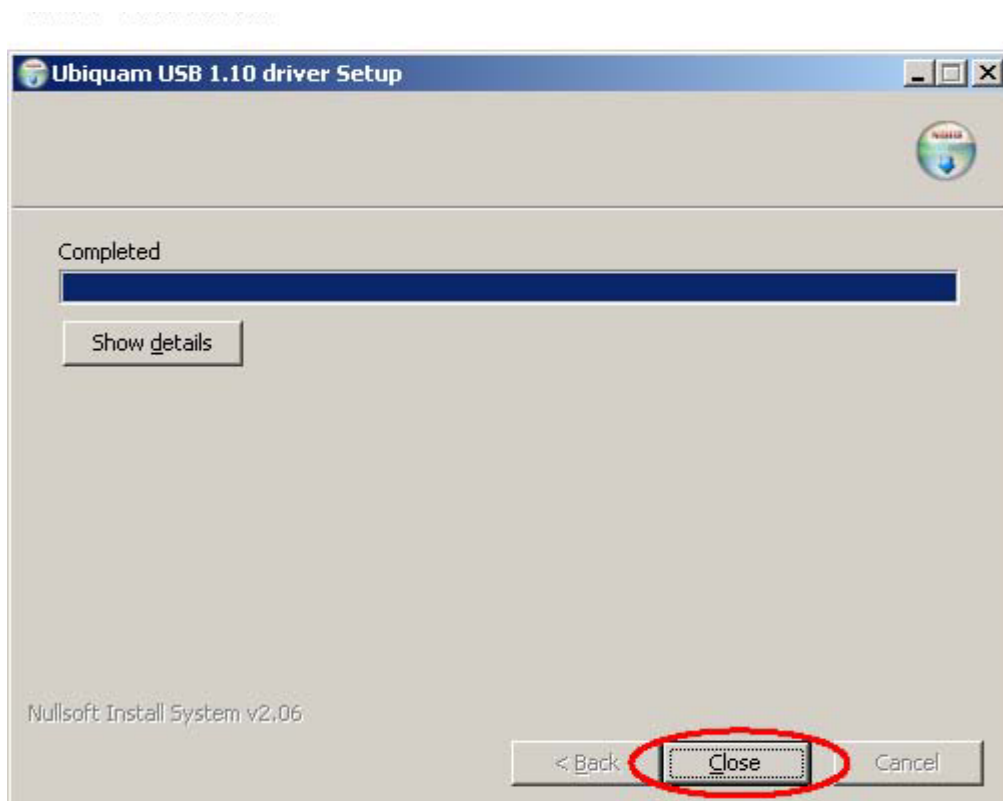
# 1. Ubiquam USB driver суулгах зааварчилгаа

1.1. "Ubiquam USB driver" –ийг CD дээрээс суулгах.

1.2. "Ubiquam\_USBDriver.exe"-гэсэн файлыг нээгээд "Install" –ийг дарна.

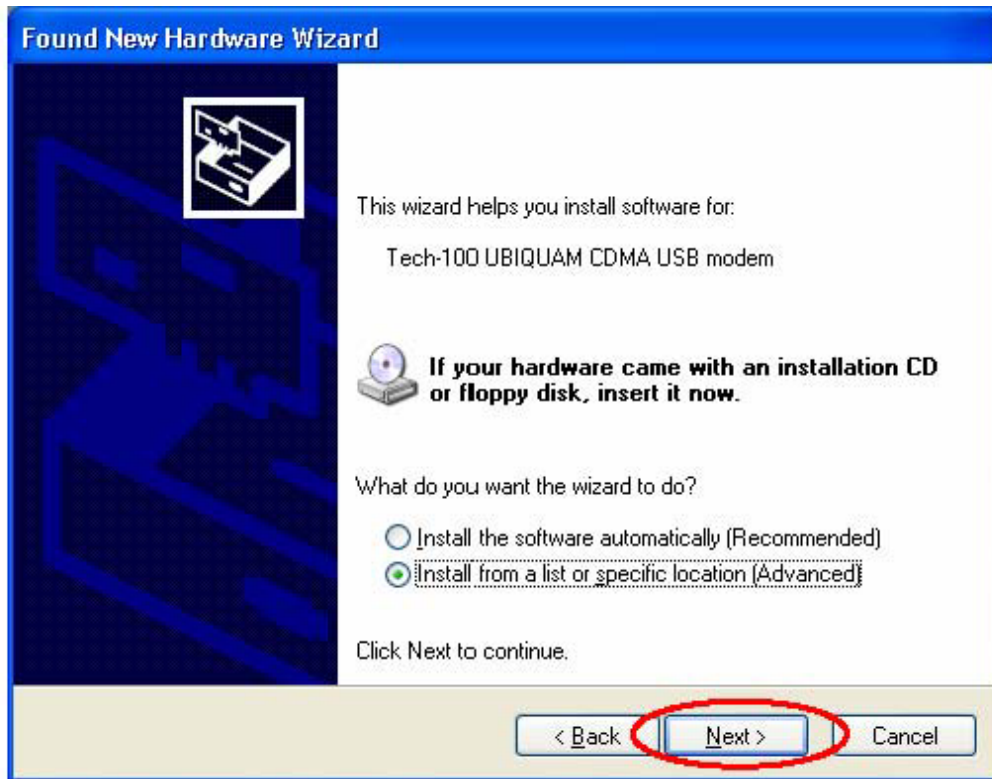


1.3. Дууссаны дараа "Close" –ийг дарна

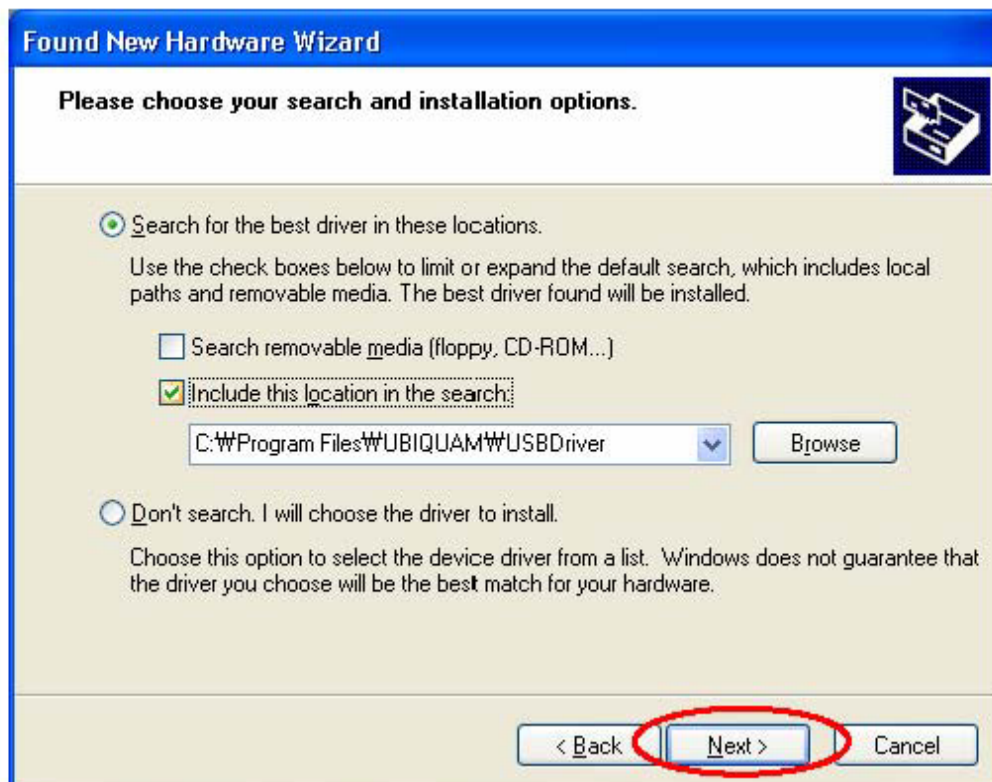


1.4. Гар утсаа USB кабелаар компьютертээ холбоно.

Ингэж холбоход доорх цонх нээгдэж гарч ирнэ. “Install from a list or specific location (Advanced)” гэснийг сонгон “Next”-ийг дарна.



1.5 “Include this location in the search” гэснийг сонгоод (C:\ProgramFiles\Ubiquam\USBDriver) тус замыг зааж өгөн [Next] гэснийг сонгон дарна.



1.6. [Continue Anyway]. Гэснийг сонгоно.



1.7 Дууссаны дараа "Unknown device" new Hardware Wizard гэсэн зүйл гарч ирнэ, ингэхэд нь 1.3. ~ 1.5. явцыг дахин давтана.

## 2. Интернетэд холбогдох (Data үйлчилгээ)

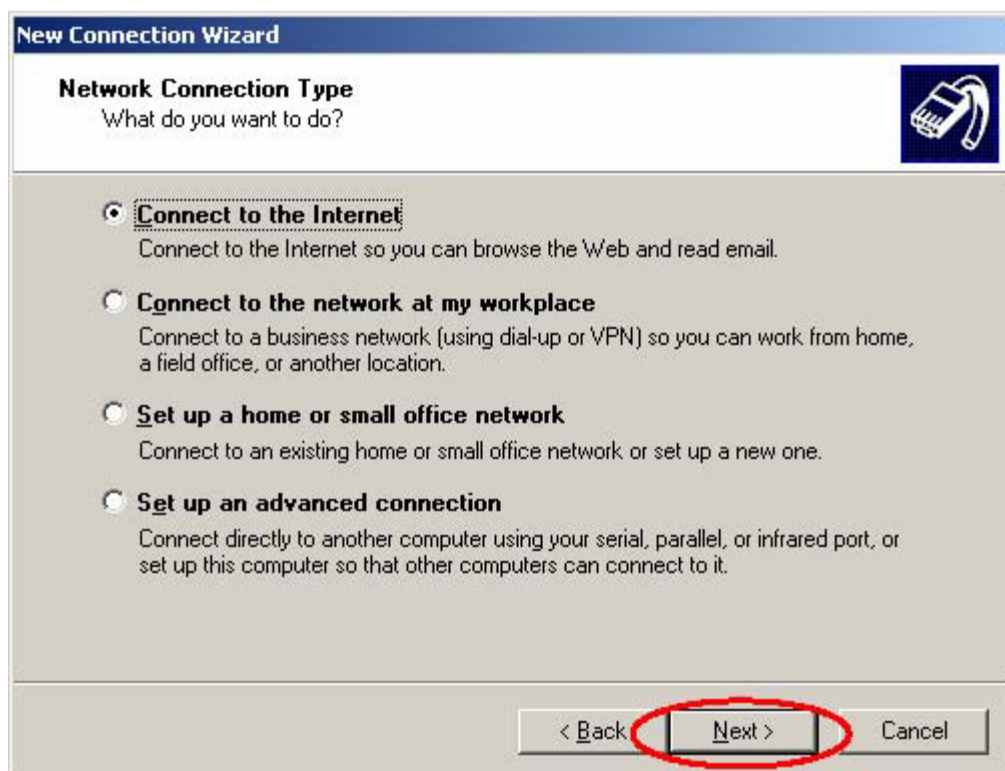
2.1 USB кабелиар Ubiquam гар утсаа холбоно.

2.2. “Start” цэс рүү ороод “Control Panel” –д орно “Network Connection” -рүү “Make New Connection” сонгоно.

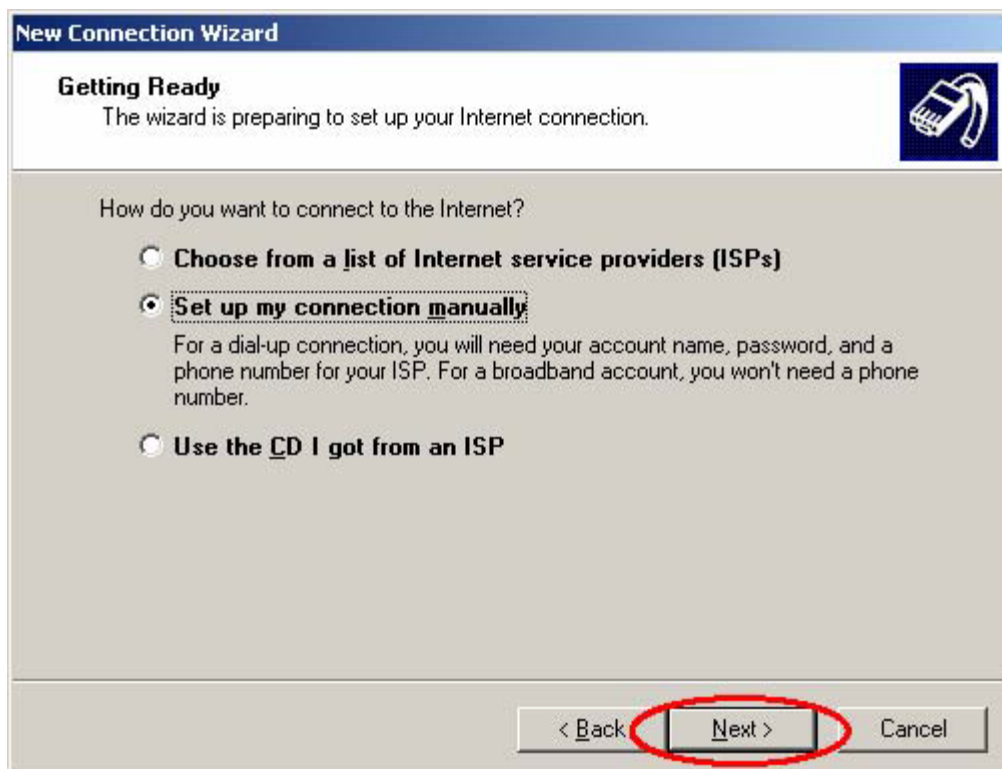
2.3. “Next” –ийг сонгоно.



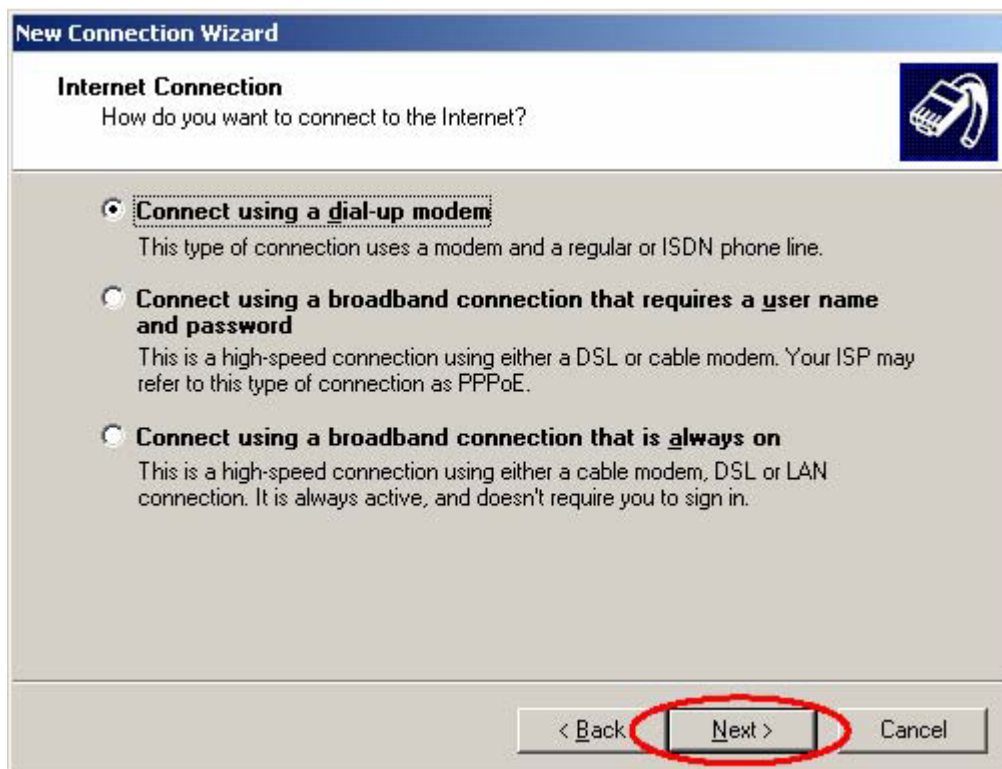
2.4. “Connect to the Internet” сонгоод “Next”-ийг дарна



2.5. "Set up my connection manually" сонгоод "Next" дарна

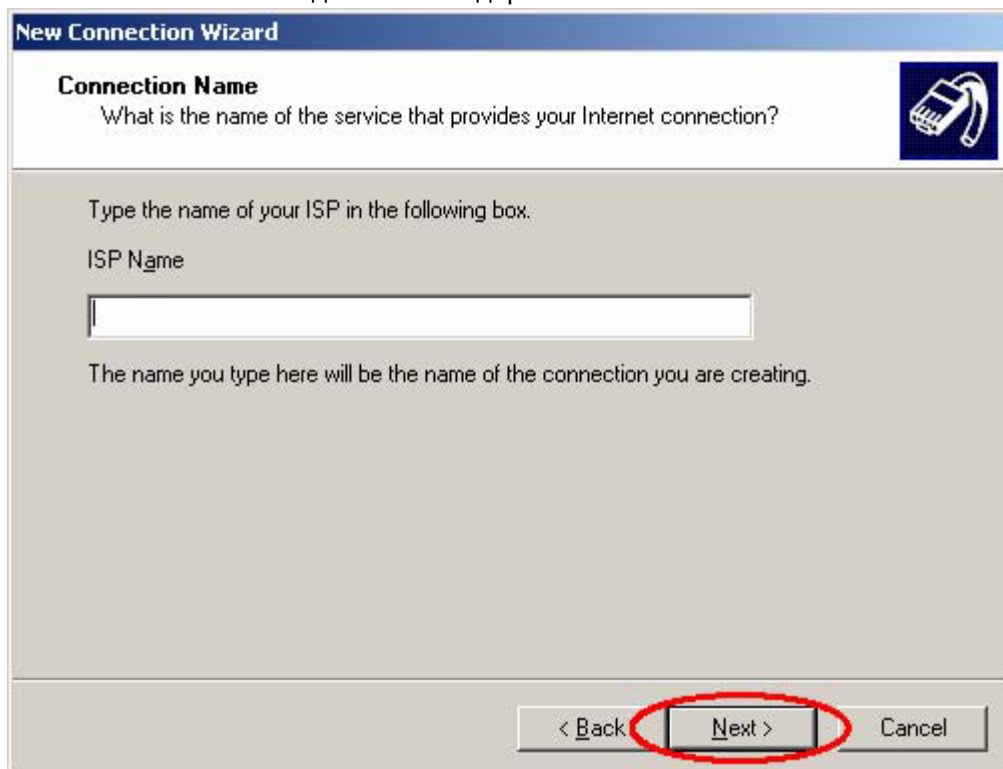


2.6. "Connect using a dial-up modem" сонгоод мөн адил "Next" дарна



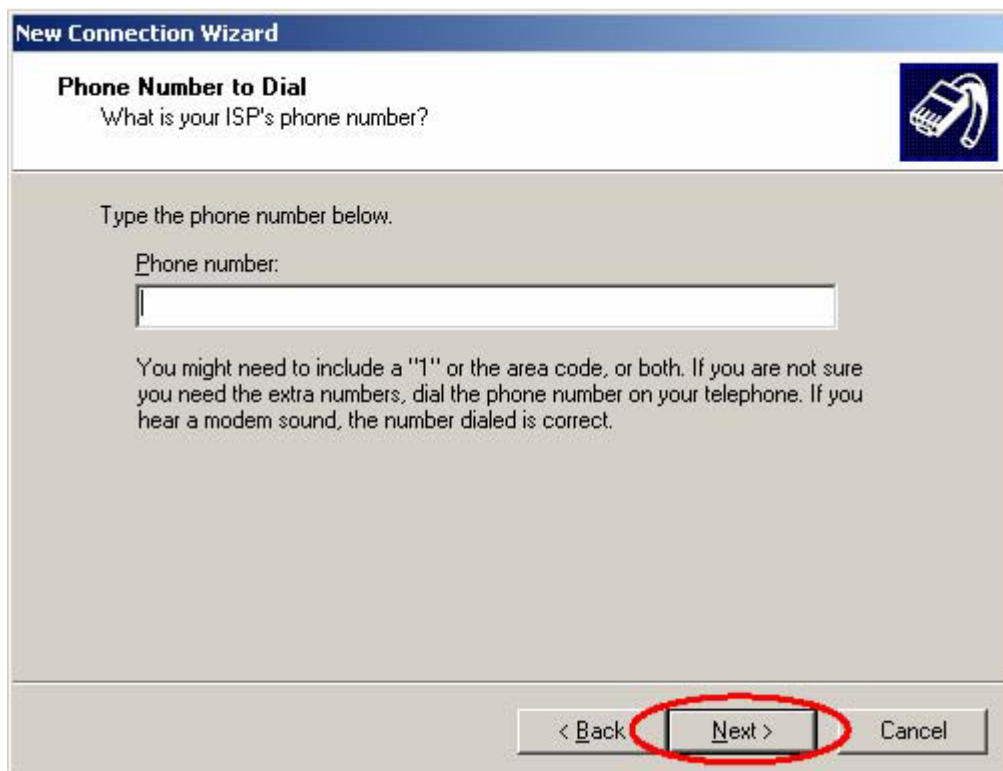
2.7. Хэрвээ таны компьютер 2 болон түүнээс дээш модемтэй бол тэр дундаасаа Ubiqum CDMA 2000, гэснийг нь сонгон идэвхжүүлнэ.

2.8. “G-mobile” гэж бичээд “Next” –ийг дарна.



The screenshot shows the 'New Connection Wizard' dialog box. The title bar reads 'New Connection Wizard'. The main heading is 'Connection Name' with a sub-question: 'What is the name of the service that provides your Internet connection?'. To the right is a small icon of a mobile phone. Below the heading, it says 'Type the name of your ISP in the following box.' followed by 'ISP Name' and an empty text input field. A note below the field states: 'The name you type here will be the name of the connection you are creating.' At the bottom, there are three buttons: '< Back', 'Next >', and 'Cancel'. The 'Next >' button is circled in red.

2.9. “Phone number” гэсэнд “#777” ингэж оруулаад “Next” –ийг дарна



The screenshot shows the 'New Connection Wizard' dialog box. The title bar reads 'New Connection Wizard'. The main heading is 'Phone Number to Dial' with a sub-question: 'What is your ISP's phone number?'. To the right is a small icon of a mobile phone. Below the heading, it says 'Type the phone number below.' followed by 'Phone number:' and an empty text input field. A note below the field states: 'You might need to include a "1" or the area code, or both. If you are not sure you need the extra numbers, dial the phone number on your telephone. If you hear a modem sound, the number dialed is correct.' At the bottom, there are three buttons: '< Back', 'Next >', and 'Cancel'. The 'Next >' button is circled in red.

2.10. "User name" гэсэн хэсэгт танд өгсөн хэрэглэгчийн нэрийг оруулаад "Password" болон "Confirm password" гэсэн 2 хэсэгт нууц үгээ давтан оруулаад "Next" –ийг дарна.

**New Connection Wizard**

**Internet Account Information**

You will need an account name and password to sign in to your Internet account.

Type an ISP account name and password, then write down this information and store it in a safe place. (If you have forgotten an existing account name or password, contact your ISP.)

User name:

Password:

Confirm password:

Use this account name and password when anyone connects to the Internet from this computer

Make this the default Internet connection

< Back **Next >** Cancel

2.11. "Finish" –ийг дарна

**New Connection Wizard**

**Completing the New Connection Wizard**

You have successfully completed the steps needed to create the following connection:

**Dial-up Connection 2**

- Make this the default connection
- Share with all users of this computer
- Use the same user name & password for everyone


The connection will be saved in the Network Connections folder.

Add a shortcut to this connection to my desktop


To create the connection and close this wizard, click Finish.

< Back **Finish** Cancel



2.12. Ингээд дэлгэцэн дээр  айкон гарсан байх бөгөөд түүнрүү орно. Ингээд доорх цонх дэлгэцэн дээр гарч ирэх бөгөөд “Dial” гэсэн товчлуурыг дарснаар та интернэтэд орох болно.



2.13 Интернэтээс гарахдаа дэлгэцний баруун доод буланд байрлах  дүрс дээр хулганы баруун товчлуурыг даран гарч ирэх цонхноос “Disconnection” гэснийг дарж гарна.

Интернэтээ салгахдаа дээрх үйлдлийн дагуу заавал салгах хэрэгтэйг анхаарна уу.